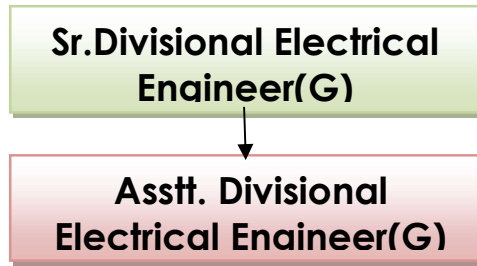


**GAZETTED ORGANIZATION & DESCRIPTION OF DEPARTMENT**



General Service’s wing of electrical department under Ranchi division is responsible for ensuring incessant electricity to the 54nos. of electrified railway stations, 61nos. of manned LC gates and large nos. of staff quarters, associated service buildings, hospitals, running rooms and health units spread over the division in close co-ordination with SEBs for ensuring smooth operations of railway activities.

Only Coaching Depot of the division is at Hatia, where 327 AC & 481 Non-AC Coaches are being maintained. There are three main maintenance settlement spread over the division for maintenance and upkeep of electrical assets. These are situated at Hatia, Ranchi and Muri where supervisors and staffs are posted.

There are 16nos. of DG Sets being maintained in the division for providing standby power supply. This department is also maintaining pumping installation for providing water supply to railway colonies and stations.

**TOTAL STATION OF RNC DIVISION HAVING ELECTRICAL MAINTENANCE**

Total nos. of stations	NSG-3	NSG-5	NSG-6	HG-1	HG-2	HG-3
55	2	5	35	0	9	4

**OVERVIEW OF RNC DIVISION**

01	Total Railway Stations	55
02	No. of electrified manned LC gates	61
03	Nos. of primary maintenance trains	29
04	Nos. of secondary maintenance trains	14
05	Nos. of primary maintenance rakes	41
06	Nos. of secondary maintenance rakes	23
07	Total AC Coaches	327
08	Total Non-AC Coaches	481
09	Total No. of Pantry Cars	11
10	Total No. of Power Cars	30
11	Nos. of substations	52
12	Transformer	75
13	HSCF Pump	41
14	Submersible Pump	109
15	Monoblock Pump	01
16	Jet Pump	02
17	Diesel Driven HSCF	02
18	D.G.Sets	16

19	Window & Split AC Unit	347 (S:312,W:35)
20	Water Cooler	21
21	Solar water heater, (500LPD AT RMT)	01
22	Escalators	08
23	Lifts	07