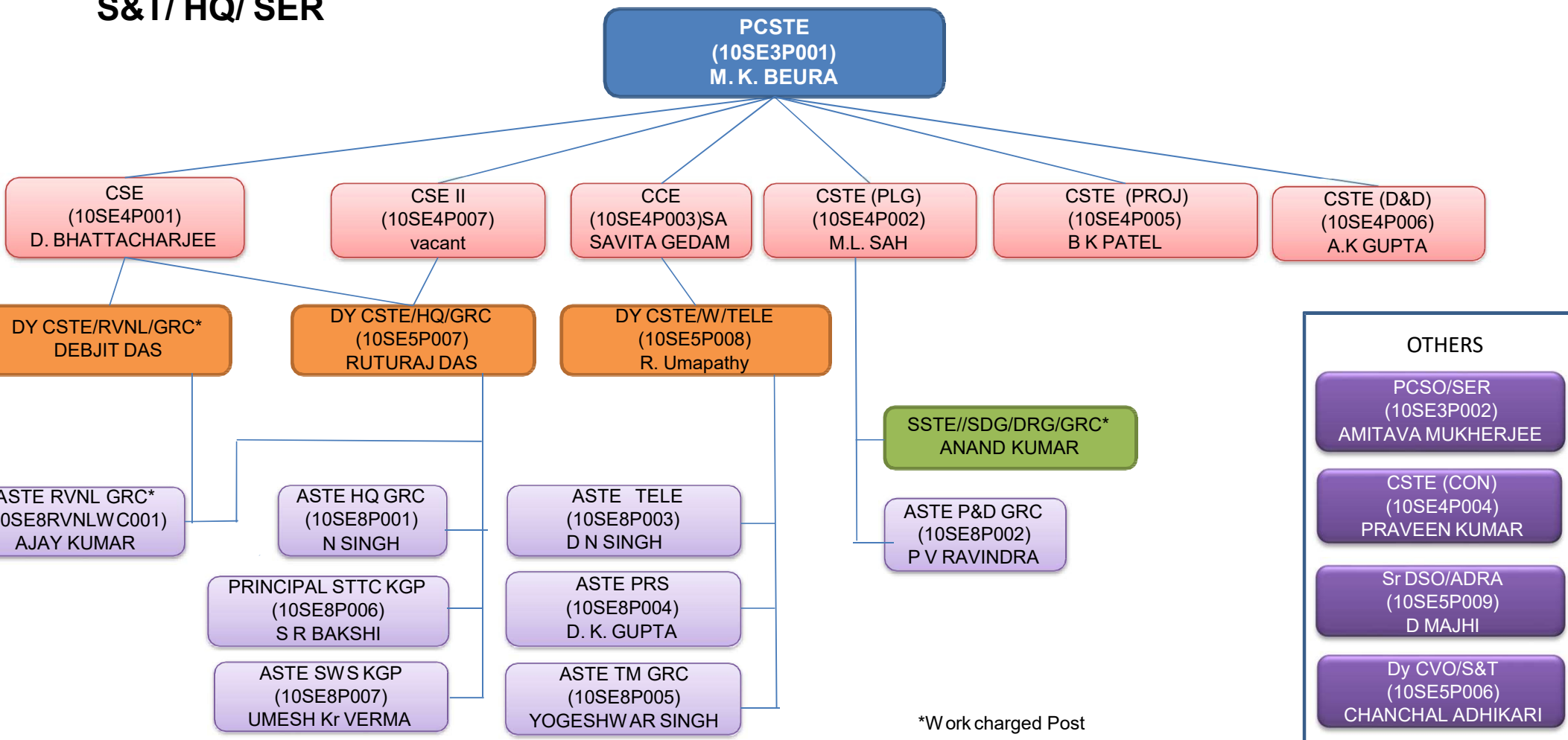


Organisation Chart

**Signal & Telecommunication
South Eastern Railway**

S&T/ HQ/ SER



S&T - DIVISIONS

Kharagpur

Sr DSTE (CO)/KGP
(10SE5P002)
H. MEENA

Sr DSTE (SIG)/KGP
(10SE5P003)
B K DASH

DSTE /EAST/KGP
(10SE6P001)
J.P. SAHOO

DSTE /SRC
(10SE6P007)
YADAV ANKIT

ASTE KGP
(10SE7P005)
B.MAITY

ASTE BLS
(10SE7P003)
V. A.PATIL

ASTE W KGP*
(10SE8OLWC001)
N.K.SINGH

ASTE SRC
(10SE7P009)
(vacant)

Chakradharpur

Sr DSTE/CKP
(10SE5P004)
N. M. DAS

DSTE/SW/CKP*
SATYAM KUMAR

DSTE /JSG
(10SE6P005)
N M DASH

ASTE TATA
(10SE7P006)
A K NAYAK

ASTE DPS
(10SE7P002)
ANIL KUMAR

ASTE ROU
(10SE7P008)
SANJEET KUMAR

ASTE CKP*
(10SE8OLWC002)
JITESH Kr SAPAWAT

Adra

Sr DSTE/ADRA
(10SE5P001)
K. K. GARG

DSTE/SW/ADA*
ANKAJ KUMAR

ASTE ADA
(10SE7P001)
VIPUL KUMAR YADAV

ASTE BKSC
(10SE8P008)
NARENDRA DALEI

ASTE II ADA*
(10SE8OLWC003)
K P SINGH

Ranchi

Sr DSTE/RNC
(10SE5P005)
N. PANCHAL

DSTE/RNC
(10SE6P002)
S KUMAR

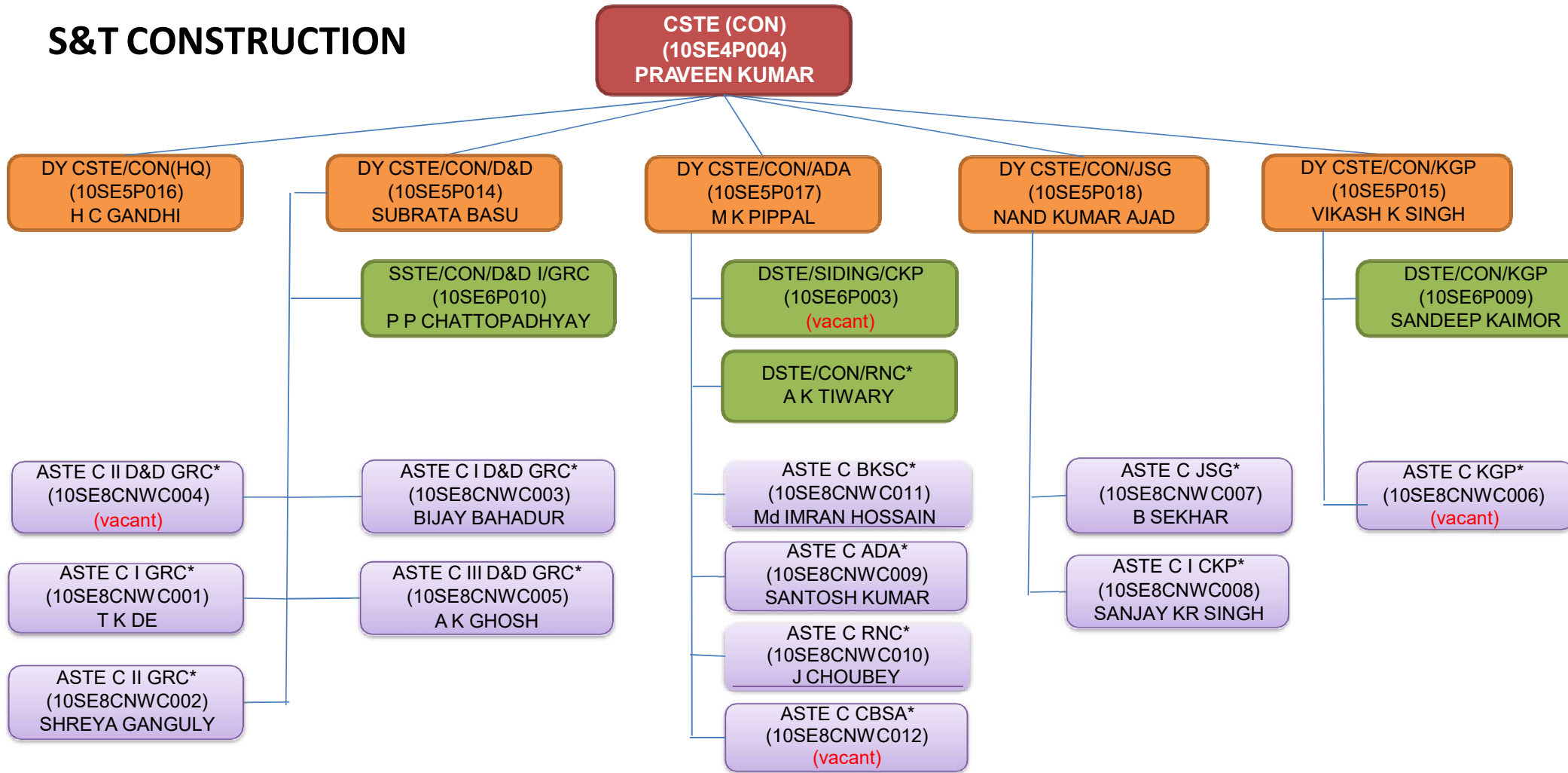
ASTE RNC
(10SE7P004)
Ms ABHA MINJ

ASTE W RNC*
(10SE8OLWC005)

ASTE MURI
(10SE7P007)
SOMNATH DUTTA

*Work charged Post

S&T CONSTRUCTION



*Work charged Post

S&T PROJECT

PCSTE
M. K. BEURA
(10SE3P001)

CSTE (PROJ)
(10SE4P005)
BIKASH K PATEL

CSTE (PROJ) II
(10SE4P006)

DY CSTEM/HQ
(10SE5P013)
R UMAPATHY

DY CSTE/PROJ/ADA
(10SE5P011)
MAHENDRA SINGH

DY CSTE/PROJ/KGP
(10SE5P012)
SUDHIR KUMAR

DY CSTE/PROJ/D&D/GRC
(10SE5P010)
P K SHARMA

ASTE P II KGP
(10SE8PRWC005)
B.B.SINGH

ASTE P ADA
(10SE8PRWC007)
B B SINGH

ASTE P RNC
(10SE8PRWC008)
S K SINGH

AXEN/W/ENGG
(10SE8OLWC004)
A K JHA

DSTE/PROJ/ROU
(10SE6P006)
PAWAN KUMAR

DSTE/PROJ/SRC
(10SE6P008)
(vacant)

ASTE P KGP
(10SE8PRWC006)
U K PASWAN

ASTE P II GRC
(10SE8PRWC004)
TAPAS K HALDAR

SSTE/W/SIG/HQ
(10SE6P004)
A SENGUPTA

ASTE P GRC
(10SE8PRWC001)
P S BAA

ASTE P I D&D GRC
(10SE8PRWC002)
NIRMAL HAZRA

ASTE P II D&D GRC
(10SE8PRWC003)
K K MONDAL