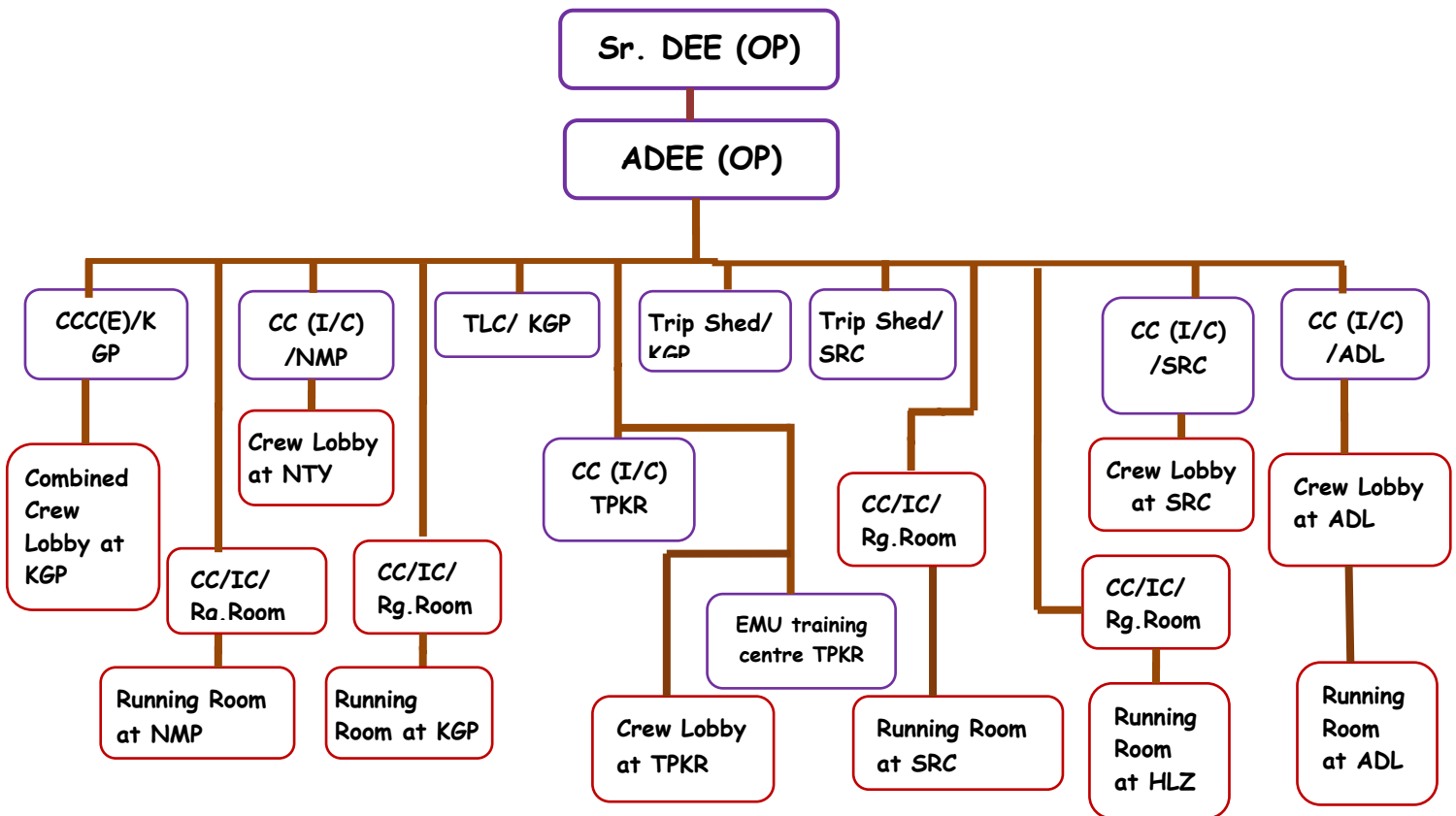


# ELECTRICAL (OP) DEPARTMENT



## THE ORGANIZATIONAL STRUCTURE & MANPOWER DEPLOYMENT



The organization comprises of Electrical operations and outstation maintenance of locomotives. There are 05 nos. of Crew Lobbies, 05 nos. of Running Rooms, 02 nos. of Trip Sheds & 01 EMU Training Centre under the control of Sr. DEE (OP)/KGP of Electric (OP) organization.

## **GENERAL INFORMATION:**

- 1.1 The whole division is now fully electrified.
- 1.2 Train services, both coaching and goods (100%) in KGP division are working with electric traction.
- 1.3 The jurisdiction of KGP division extends from Ex. **HWH to RHE, PKU-HLZ, SRC-AMTA, KGP-MDN, KGP-RNTL, TMZ-DGHA & ROP-BPO-BGY, SRC-SHM.**
- 1.4 The average holding of Goods locomotive of Kharagpur division is **149** and that of Coaching locomotive is **41**.
- 1.5 On an average **126 Mail/Exp& Passenger, 152nos of EMU/MEMU trains and 240 goods trains** are currently running in KGP division.
- 1.6 There are two Electric Loco Sheds in the division **ELS/SRC& ELKP/KGP.**
- 1.7 **ELS/SRC** holding - **100 Locomotives** & **ELKP/KGP** holding - **202 Locomotives.**
- 1.8 First Vandebharat train inaugurated in KGP division on date -18.05.23 ex HWH - PURI
- 1.9 Second Vandebharat train inaugurated in KGP division on date -27.09.23 ex HWH - RNC.
- 1.10 First Amrit Bharat train inaugurated in KGP division on date - 30.12.23 ex MLDT - SMVB
- 1.11 Mrs. Dipannita Das, First lady Motormen of S.E Railway work on train no: 38806/38815 on 25.20.23.
- 1.12 The Crew booking at combined crew Kharagpur is fully computerized with 100 % CMS facility. 03 nos. of CMS KIOSK (Integrated) are utilized round the clock for sign "ON/OFF"
- 1.13 Minor maintenance of Electric locomotives as well as locofailure attended at trip shed at **Kharagpur & Santragachi.**

**ELECTRICAL OPERATION**

**KHARAGPUR**