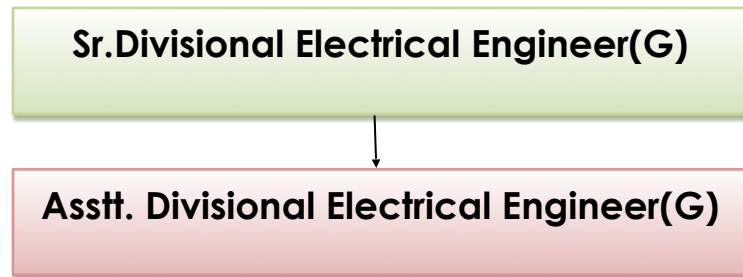


## GAZETTED ORGANIZATION & DESCRIPTION OF DEPARTMENT



General Service's wing of electrical department under Ranchi division is responsible for ensuring incessant electricity to the 53nos. of electrified railway stations, 63nos. of manned LC gates and large nos. of staff quarters, associated service buildings, hospitals, running rooms and health units spread over the division in close co-ordination with SEBs for ensuring smooth operations of railway activities.

Only Coaching Depot of the division is at Hatia, where 325 AC & 467 Non-AC Coaches are being maintained. There are three main maintenance settlement spread over the division for maintenance and upkeep of electrical assets. These are situated at HTE, RNC and Muri where supervisors and staffs are posted.

There are 16nos. of DG Sets being maintained in the division for providing standby power supply. This department is also maintaining pumping installation for providing water supply to railway colonies and stations.

### TOTAL STATION OF RNC DIVISION HAVING ELECTRICAL MAINTENANCE

Total nos. of stations	NSG-3	NSG-5	NSG-6	HG-1	HG-2	HG-3
55	2	5	35	0	9	4

### OVERVIEW OF RNC DIVISION

01	Total Railway Stations	55
02	No. of electrified manned LC gates	63
03	Nos. of primary maintenance trains	28
04	Nos. of secondary maintenance trains	16
05	Nos. of primary maintenance rakes	40
06	Nos. of secondary maintenance rakes	24
07	Total AC Coaches	325
08	Total Non-AC Coaches	467
09	Total No. of Pantry Cars	13
10	Total No. of Power Cars	30
11	Nos. of substations	52
12	Transformer	72

13	HSCF Pump	27
14	Submersible Pump	87
15	Monoblock Pump	01
16	Jet Pump	02
17	Diesel Driven HSCF	02
18	D.G.Sets	16
19	Window & Split AC Unit	293
20	Water Cooler	18
21	Solar water heater, (1000LPD-1, 500LPD-1)	02
22	Escalators	06
23	Lifts	05