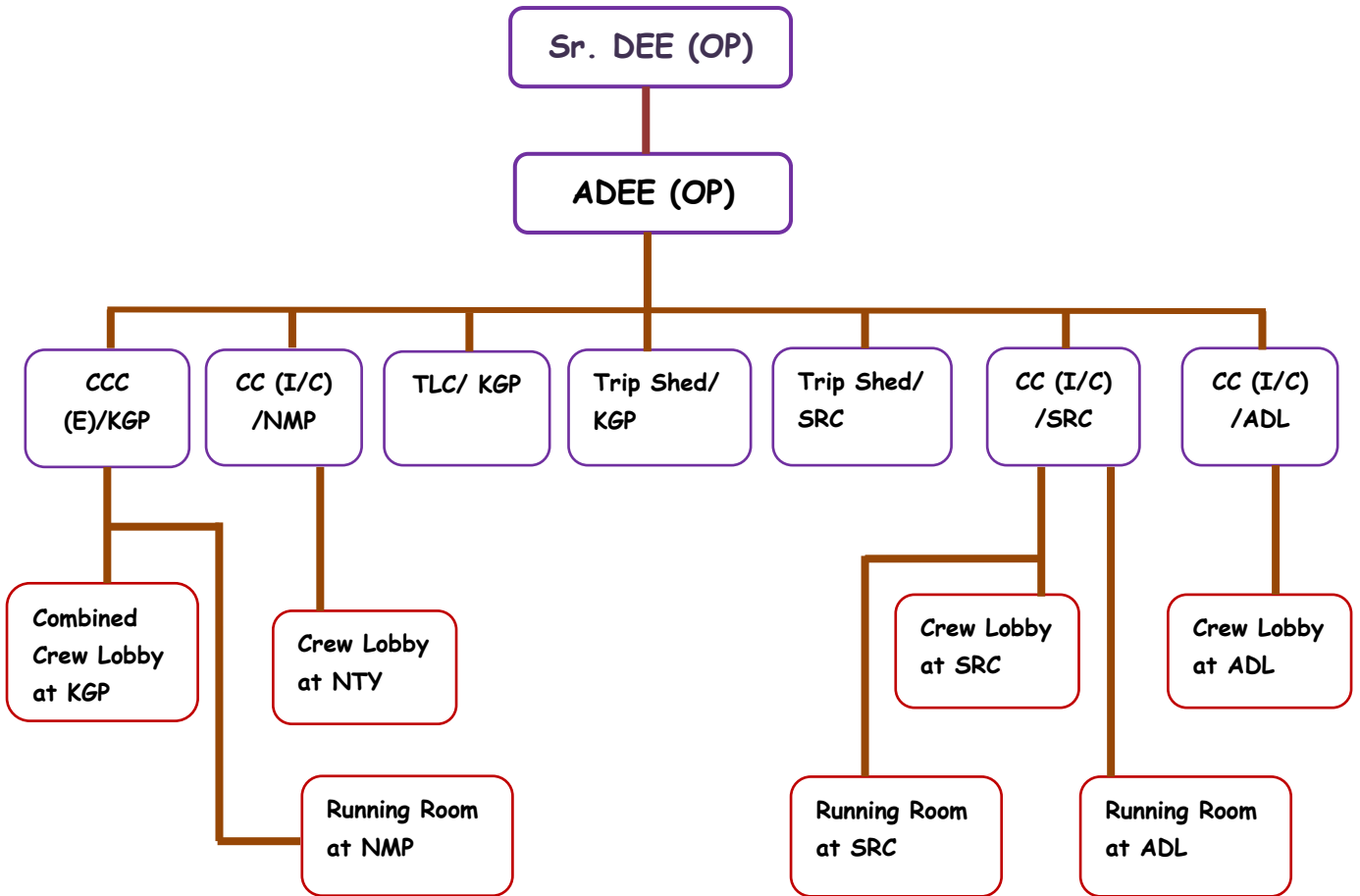


ELECTRICAL (OPERATION)

ORGANISATION STRUCTURE



GENERAL INFORMATION:

Bulk of train services, both coaching and goods (100%) in KGP division are working with electric traction. The whole division is now fully electrified. The jurisdiction of KGP division extends from Ex. HWH to RHE, PKU-HLZ, SRC-AMTA, KGP-MDN, KGP-BHC, TMZ-DGHA & ROP-BPO-BGY.

The average holding of Goods locomotive of Kharagpur division is 145 and that of Coaching locomotive is 41. On an average 120 Mail/Exp & Passenger, 148 nos of EMU trains and 218 goods trains are currently running in KGP division.

There are two Electric Loco Sheds in the division. ELS/SRC holding 100 & ELKP/KGP holding 202 Locomotives.

The organization comprises of Electrical operations and outstation maintenance of locomotives. There are 4 nos. of Crew Lobbies, 5 nos. of Running Rooms i.e. 3 nos. under Electrical & 2 nos. under Mechanical wing and 2 nos. of Trip Sheds to look after Electric (OP) organization.