

# ELECTRIC LOCO SHED, ROURKELA



1. HISTORY OF ELSR
2. ORGANISATION STRUCTURE
3. MISSION
4. MILESTONE
5. INFRASTRUCTURE
6. Centre of Excellence (CoE)

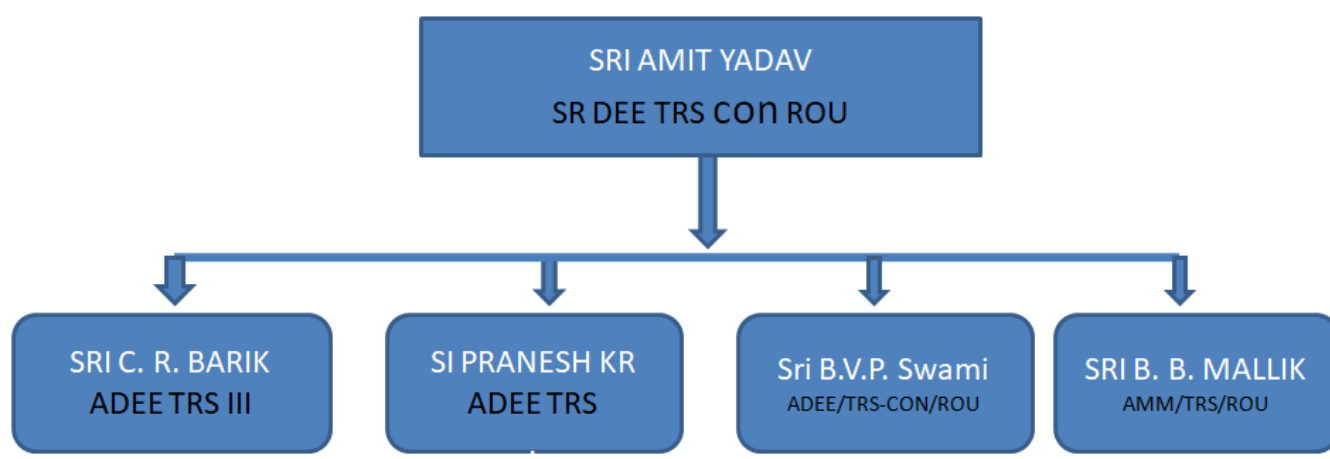
## 1. HISTORY AND MILESTONES OF ELSR

ELECTRIC LOCO SHED, ROURKELA is the 3<sup>rd</sup> electric loco shed of Chakradharpur Division, South Eastern Railway, situated at about 8 km from Rourkela, a smart city under Sundergarh district of Odisha. In order to fulfill the demand for more freight locomotives of SER as well as the adjacent zonal railways, the work of construction of ELS/ROU was awarded to IRCON on 07.11.2012 and MoU was signed on 31.12.2012 for homing 200 locomotives on a Turn-Key basis.

The foundation stone was laid by Honorable Railway Minister Mr. Suresh Prabhu on the 7th Of June 2015 and work was started at the end of 2016 after completion of formalities for land acquisition.

It started its journey to hold and maintain the first WAG9H class of locomotives from 08.01.2019 with loco number 32219. It had started its loco commissioning and maintenance activities with very limited manpower in a small machine shop at the starting of the year 2019. At present Electric loco shed, Rourkela is holding 123 no's of WAG9H locomotives with a manpower of 290. All the locomotives under the holding of the shed are of C-DAC-based propulsion of M/s ABB and CGPIL.

## 2. ORGANISATION STRUCTURE



### **3. MISSION**

Provide a stipulated number of electric locos as per traffic requirements while ensuring safe and reliable Electric Locomotives. Ensuring implementation of prescribed maintenance schedules in a cost-effective manner without compromising with safety and continuous improvement of maintenance practices by reviewing the failure and taking reliability enhancement measures.

### **4. MAJOR MILESTONE**

- The work of construction of ELS/ROU was awarded to IRCON on 07.11.2012 and MoU was signed on 31.12.2012 for homing 200.
- The foundation stone was laid by Honorable Railway Minister Shri Suresh Prabhu on the 7th Of June 2015.
- The work of the project 'Electric loco shed, Rourkela' was started at the end of 2016.
- 1<sup>st</sup> Loco 32219 was commissioned on 08.01.2019 from a small inspection bay.
- CCB test bench was installed and inaugurated on 10.05.2019 in CoE by then Pr.CEE/SER Shri Gautam Banerjee.
- The inspection bay, Substation and Centre of Excellence were inaugurated on 31.07.2019 by Smt Manju Gupta AML/Railway Board.
- Commissioning of the 100th and heavy lifting bay with major M &Ps like loco lifting tackle, handling equipment, ovens were inaugurated on 11.01.2021 by then Pr.CEE/SER Shri. Rahul Gautam.
- The DGA and BDV test set was commissioned and inaugurated on 04.03.2021 by Shri Ishaq Khan Pr.CEE/SER.

## 5. INFRASTRUCTURE OF ELS/ROU

### SERVICE BUILDING 1

1. GROUND FLOOR - 164M Building, space for a different section, custody stores and record rooms 1st floor 110 m staff canteen and S&T room administrative wing includes officers chambers.

### HEAVY LIFTING BAY

- Heavy lifting, lines 5&6 with 3 nos. 65/10 ton EOT cranes
- Medium lifting, line no. 3&4, 2 nos. 35/6 ton EOT cranes
- Light lifting line no. 1&2 line, 2 nos. 35/6 EOT cranes



### SERVICE BUILDING 2

Single story building of 164 m in length. It consists of 13 rooms with 2 sets of toilets for a different section, staff room, PPIO, meeting room, overhauling of aux motor, pneumatic, cleaning staffs and ladies and gents toilets.

## **INSPECTION BAY**

5 Nos. of the electrified line provided with isolators and well illuminated single and multi loco pits for minor inspection and testing purposes.



## **PIT WHEEL LATHE**

### **Lathe Machine Specifications:**

Capacity: Single Broad Gauge Loco

Make: HYT Engineering Company Pvt. Ltd



## **MATERIAL HANDLING EQUIPMENT**

Item	Make	Quantity
Semi electric stacker	Godrej	1
Fully electric stacker	Godrej	1
Hydraulic hand pallet	Godrej	6
Manual drum stacker pallet	Godrej	2
Self-propelled scissor lift	Godrej	1
2T battery-operated platform Truck	Godrej	2
3T electric forklift	Godrej	2
Scissor hand pallet	Godrej	1
Hydraulic scissor lifting Platform	Vanjax	2



## 6. CENTRE OF EXCELLENCE (CoE)

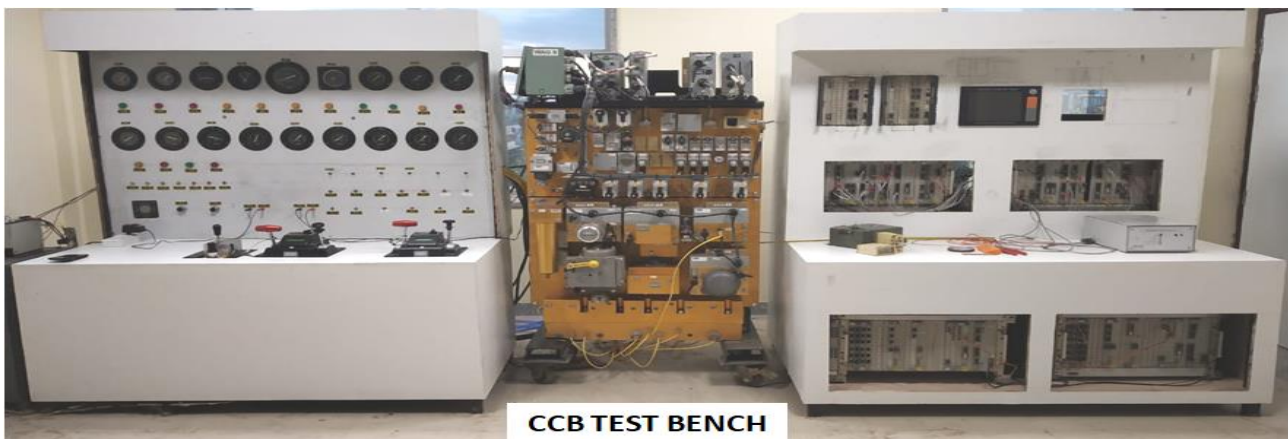


### Objective

Develop centralized electronic repairing facility and support to S.E.Railway. Improve /Enhance the knowledge and skill of maintenance and locomotive operating staff of Indian Railways.

### Facilities available

CENTRALISED PNEUMATIC REPAIR LAB





**MECHANICAL LAB and HEAVY REPAIRING SHOP**



**EXTERNAL VIEW OF CAB**



**INTERNAL VIEW OF CAB**

**COMPUTER BASED TESTING CUM TRAINING LAB**

**CLASS ROOM WITH AUDIO VISUAL AND WI- FI ARRANGEMENT**





ELECTRONIC LAB



AUDITORIUM

