

दक्षिण पूर्व रेलवे

National Rail Virasat Bhaban, Adra (an Extension of National Rail Museum- N.Delhi)



Steam Crane

This unique 10 ton Steam Crane was built in Naples- Italy in the year 1953 and brought in the Birasat Vhaban campus on 28.01.14 and the Crane was in use on the BDR section, a private railway company.

This Steam Engine No-DELTA 11 was built by W.G.Bagnall LTD. of Stafford. This class of locomotive has water tank on both sides of the boiler and the tender is only for coal (not provided with this Engine). The engine has a wheel arrangement by 2-6-2 and a 2'6" Gauge. This locomotive was working on BDR section; This company was making Engines since 1897. The Piston ring cylinder of this Engine was built in the year 1953. it is brought in the Birasat Vhaban campus on 28.01.14.



NG Engine



Wire laying car

The SE 6583 BF wagon whose journal was built in the year 1932 was improvised to use as OHE wire laying car and is brought in the Birasat Vhaban campus on 28.01.14. The wagon extensively used in the Damoder Kalipahari Section of Adra Division.



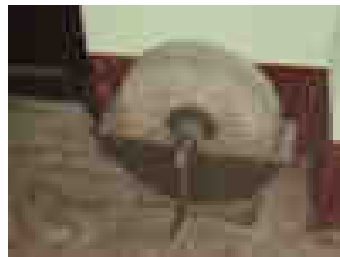
We Preserve
Heritage

Steam 'Power Boiler' to generate power to drive fly wheels atop it, so this wheels can be connected with shaft to transfer power to rotate other devices like wheel turner, lath, shaping machine and other auxiliary jobs required for Machine shop.

This unique steam power boiler was in use when electric motor was not discovered / popular, and was built in the year 1916, it was in service up-to 1996 in BDR-Bankura district. and taken from and placed for exhibition at Virasat Bhaban on 13.08.07.



Power Boiler



Hand Grinder

A machine tool that was in use at S&T department to polish Chisel, Knife, etc and to sharpening other items as well.

Search Light

Kerosene oil type Search Light, very effective for attending brake down in night or to bring to accident site.



A social duty to our important customers.

Container with handle, made of brass to distribute water from station platforms to passengers whether on board or alighted at destination. With the help of this Brass Container; specially deputed employee, designated as 'Panipare' used to serve Drinking waters.



Keeping water at various station in earthen pots were also another chapter. Some static vessels were called Matka, some as Kujo etc. and these Matka were kept half merged in sand and by using to cover with red wet salu to keep water cool. Small cover type huts were also built on platforms to keep such Matka by pouring drinking water

(new generation using water bottle can not imagine the days of Steam Engines- we have seen how little girls at Bikanir station used to come to collect even hot water discharged through Boiler of the Eng.)

Signal lamp for Semaphore Arm type Signals



Removable and Fixed type Signal lamps. (As a general Rule the Length of the wick used to be not shorter than 175mm for daily use and width of the wick was usually of 9mm \pm 1mm.)

The Kerosene oil with smoke Point No.22 was in use and the fount/ dubber was filled with not less than $3\frac{3}{4}$ fluid OZS for enabling the signal- lamp to burn for the whole night.

Interestingly the residual oil in the fount used to drain off and fresh oil was put in as a prescribed rule. Special Type Table was there to run out such Oil. The lamp is provided with two lenses in front and in rear. The front light to pass through the Red, Green, Yellow roundel to indicate the aspect of the signal to the incoming Driver and the back light to the Station staff to know whether the lamp is burning or not Made in the year 1907.

BNR Badge for Peon

Badge made of brass to wear by Peon on duty.





This specially designed belt had been using by our Guards. One can notice space to keep whistle and watch.

Leather, Stitching, brass dices etc. are other points of interest. To know how the belt was used by the guards of the train please see the artifacts with picture there.

Table Lamp

Kerosene oil wicks type Lamp were in use in railway as Station Master's Table Lamp, it might have other uses as there were various shapes and visual appearance.



Radio Transmitter

Valve set Radio Transmitter with Tuning Unit, was in use long before VVLIC, LIC, IC, Silicon Transistor, Germanium Transistors. Not for voice transmission but sending Dhi - Dha Morse codes. According to my knowledge we used to send reservation message to foreign rail also. We have unique Code book for this purpose but at present not in use. The office where such machine was installed we used to call as 'Tar Office'

and related employees as 'Tar Babu'. Public could also get help from here for sending message to there villages, towns etc. by paying service charges. Presented by S&T Department . Same types of instruments were used by US Army. This set is a combination of Radio Transmitter and Transmitter Tuning Set. The tuning set was made by General Electric, USA and the Transmitter by Farnsworth Television & Radio Corp.USA

Mechanical Calculator to keep accounts and ledger by Europeans during colonial days and collected from South institute – Adra, where entry for natives were restricted till independent.

The machine was in running condition upto 2003 but got damaged by rainwater dropping on it from roof of the south institute just in a year.

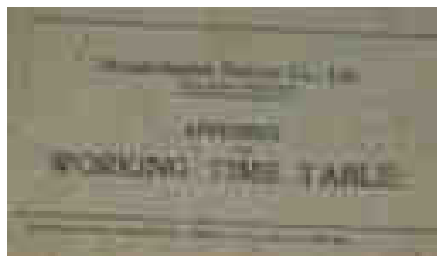


Mixture with Handle the indigenous device was in use to blend with pigments, the dry colour powder was mixed with Varnish etc. to prepare paint. [presented by Sri Debashis Mitra SSE- Adra.]

Iron cast paper weight of different shapes and size embossed with BNR and a wooden frame to hold blotting paper [Presented by Sri Ashit Bhattacharjee OS- Optg. And Sri Dipak Dostidar Steno - Sr.DOM/ Adra. Collected during 2002.]



Double Head Rail made in the year 1894, collected from Adra West Cabin and preserved in Heritage building.



Working Time Table printed on 05.09.1941. by Lal Chand and Sons, Calcutta. for Bengal Nagpur Railway, Total 1500 books were printed on this job.





Rain water Pipe. Made in Glasgow. Previously all most all Bungalows were equipped with such Pipes but as the cost of iron soared high these are vanishing (from 2008 onward) and plastic pipes are supplied. This building was also fitted with such pipes and has been thieved.

Still we have such rainwater pipes with Bungalow no O/5 in very good condition without any rust and intact, well fitted with wall.

The old Hand-Wound Grand Clock

This clock was made by Limton Co in the year 1891

And the clocks made by Anglo-Swiss, Seth Thomas, E.N.Welch & Co, Birge & Peck, Alkins, Ansonia were also priceless



Electric Fans blade made of Wood. One can notice the blackish one is made of solid wood and the white painted blade is given aerodynamic shape and made of ply wood. It is collected from Adra Elec.(Const) office and presented by Manna Babu, EF.





'Sykes' three position Lock and Block Instrument, these type of Instruments were in use on Double Line section to get Line Clear from the Stn. Master in advance; (prior to sending a Train) through this instrument to ensure that there is only one Train between two Block Stations on the said line.

Neale's Ball Token Instrument-'A' type.

These instruments are called Lock and block instrument and were in use for working of trains on the Absolute Block System on Single Line section to ensure only one train shall be between two Block stations in any time.



These types of lamps were in use for many purposes including fixing on the FOB.



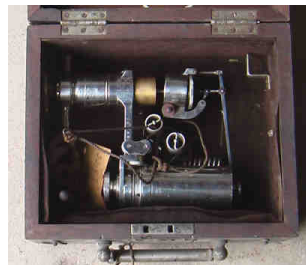
This photograph has take from JPH Station during 2005, you can see the iron frame atop of the foot over bridge where the Wicks types Kerosene lamps was used to lightening the stair case.





Telephones

Etching instrument and other electric components



Main switch

Sr.DEE/G/Adra found this 30A, 500V Main Switch while renovating the old switch gear inside Adra main Hospital complex. This was fitted inside Operation theater complex perfectly in working condition. The Main switch was made by 'Glasgow Premier Company'. Received on - 10.07.2013



Zinc Blocks that were used at KGP Printing Press to print maps on last page of our Working Time Tables before the undivided S.E.Rly. Received on 24.04.2013



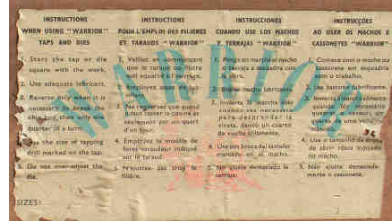


Main Switch

This unique device has all safety parameters like modern days main switch and made using porcelain in England

Presented on- 11.07.2011

Collected from Main Hospital, Adra



TAPS & DIES (Made in England) to cut thread over and inner side of the water Pipes
Received on - 24.02.2007



GRAVITY FEED TYPE
CHLORINATOR
were used to purify water
Received on - 24.02.2007



SPRING BALANCE
Made in England
Received on
- 24.02.2007



PATERSON
TYPE
CHLORINATOR
Made in England
Received on - 22.02.2007





Crockery & Tableware

DEN/Central, Adra found these Dining set in CPWI/CNI store during his inspection on 18.03.2010. It was in a broken carton in which year 1935 was mentioned and It is made by Indian firm in Calcutta. Received - 27.03.2010

Other small artifacts including Point Locking Key that were used in BQA (BQA Bankura NG Station Code) Station on BDR section



Other exhibits



Fire Extinguisher - Soda acid Type - See the Plunger, Nozzle, Handle, Body, Clip and the design. Last Refilled on 11.10.72 and last tested on 11.08.1975. Out of order due to leakage on body.(when we collected we found following information on its body)



Bricks collected from ANR, Adra, Officers Club, Sonepur Bridge, This particular Bricks was build in the year 1925 and collected from ANR rail settlement on 20.03.07.