



### ***ELECTRICAL GENERAL SERVICE: KHARAGPUR DIVISION***

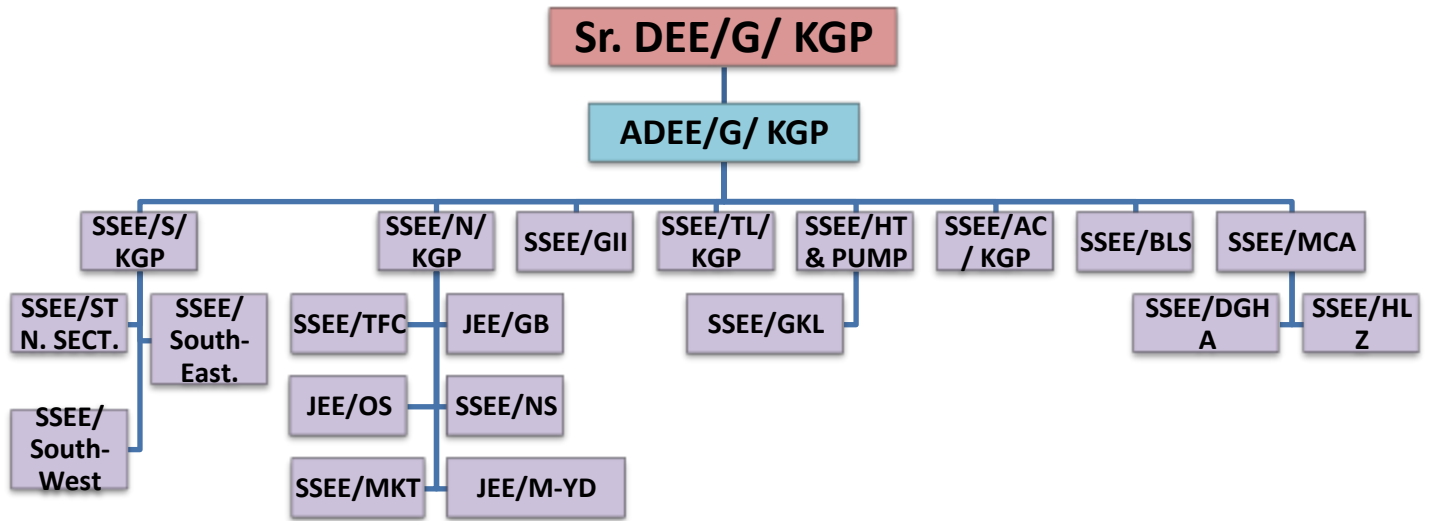
The department deals with supply of electricity and water to 100 Stations, 320 LC Gates, One Loco Sheds, 2 EMU/MEMU Car sheds and 13938 Railway quarters. To cater this, electrical power supply is availed from WBSEDCL, TPNODL and JBVNL. Only KGP Settlement consumes approximately 80 percent of total Energy consumed by the Division. KGP Settlement gets supply from KGP Work Shop Substation (33/11 KV) and feed supply to all electrical installations through 11/0.415 KV Substations (70 Nos.). 13 major stations are energised by 11 /0.415 KV Substations from respective State Electricity Boards. Additionally, the wing is also responsible for maintenance of different Air Conditioning Assets at different Railway Stations, service buildings, Hospitals etc. Installation, Commissioning and maintenance of important passenger amenity items such as Lifts, Escalators, Water coolers, LED signage, etc. is also the responsibility of this wing.

#### **Major Power Consuming Points:**

The details of major power consuming connections are listed below

<b>Srl. No.</b>	<b>Location</b>	<b>Name of DISCOM</b>	<b>Contract Demand in KVA</b>
1	Belda	WBSEDCL	50
2	Digha	WBSEDCL	50
3	Dantan	WBSEDCL	50
4	Hijli	WBSEDCL	200
5	Haldia	WBSEDCL	100
6	Carriage & Wagon Sickline, Haldia	WBSEDCL	210
7	Jhargram	WBSEDCL	119
8	Kolaghat	WBSEDCL	83
9	Mecheda	WBSEDCL	100
10	Medinipur	WBSEDCL	80
11	Panskura	WBSEDCL	100
12	EMU CarshedPanskura	WBSEDCL	50
13	Tamluk	WBSEDCL	69
14	Balsore	TPNODL	250
15	West Colony, Balasore	TPNODL	185.56
16	Gidhni	WBSEDCL	89

## ORGANISATION CHART



## JURISDICTION OF RESPONSIBILITY

Designation	Name	Jurisdiction
<b>Sr. DEE/G/KGP</b>	<b>Binoy Kumar Kisku</b>	<u>SECTION</u> Electrical General Services Assets in KGP-RNTL, KGP-RHE, KGP-BZN, KGP-MDN, PKU-HLZ, ROP-BGY, TMZ-DGHA Section.
<b>ADEE/G/KGP</b>	<b>Hidayat Ullah Khan</b>	
SSEE/South/KGP with 3 SSEEs	S.B. Nanda	Kharagpur Railway Settlement (South Side) including KGP station, KGP-MDN and LXD-HAUR Section.
SSEE/North/KGP with 3 SSEEs and 3 JEEs	Shyam Prakash	Kharagpur Railway Settlement (North Side), KKQ & KSO station in KGP-TATA section, GMDN Station in KGP-MDN Section.
SSEE/MCA with 2 SSEEs and 1 JEE	Muralidhara Sahoo	KHI to BZN in KGP-BZN, PKU-HLZ and TMZ -DGHA section.
SSEE/GII with 1 SSEE	KarunakarMahanta	SUA-RHE in KGP-TATA section.
SSEE/HT& Pump with 1 SSEE	Pradosh Kumar	11 KV HT Power lines and all pumps in Kharagpur Railway Settlement.
SSEE/BLS with 2 JEE	Arjun Minz	JER-RNTL and ROP-BGY section.
SSEE/AC/KGP	Sambhudev Acharya	Air Conditioning & refrigeration assets (including AC passing attention).
SSEE/TL/KGP with 2 JEEs	Prabhakar Kumar	TL Coaching Depot KGP

**Summary of Electrical Assets (Power) over KGP Jurisdiction**

<b>Sl. No.</b>	<b>Item</b>	<b>Quantity</b>
1.	Stations	100
2.	Substation	79
3.	Transformers	113
4.	Staff quarters	13938
5.	LC Gates	320
6.	Lifts	22
7.	Escalators	2
8.	High Mast Towers	55
9.	DG Sets	15
10.	Pumping Installation	177
11.	Air Conditioners	702
12.	Water Cooler	92
13.	Centralized AC Plants (3×40 T)	1
14.	Rooftop Solar PV Plant	13 (940 kWp)

**Details of Coach Maintenance Activities**

**Coach Holding at Train Lighting KGP**

<b>Primary Maintenance Rake at KGP</b>				
<b>Sl. No.</b>	<b>Name of the Train</b>	<b>Train No.</b>	<b>No. of Rake</b>	<b>No. of Coach</b>
1	KGP- KUR, Khurda Road Express	18021 UP	3	43
		18022 DN		
2	KGP- JJKR, JajpurKeojhar Road Express	18037 UP		
		18038 DN		
3	KGP-NSCB, Gomoh Express	18023 UP		
		18024 DN		
4	KGP-TATA, KGP-Tata Nagar Passenger	08071 UP	2	22
		08072 DN		
5	KGP-HTE Express	18035 UP	2	20
		18036 DN		
6	ART/ARME & MFD			9
7	Treasury Van			8
8	RA (DRM & ADRM Saloon)			2
	<b>Total</b>		<b>7</b>	<b>104</b>
<b>Secondary Maintenance Rake KGP</b>				
<b>Sl. No.</b>	<b>Name of the Train</b>	<b>Train No.</b>	<b>No. of Rake</b>	<b>No. of Coach</b>
1	Kharagpur-Villupuram Express	22603 UP	1	16
		22604 DN		



**Lifts Commissioned at Railway Stations**



***Rooftop Solar Plant***



***Illumination of Station and Circulating Area***